

**SANTON**  
WORKWEAR  
PTY LTD



Santon Workwear is a leading South African based manufacturer of workwear and overalls. With over 20 years experience in the industry we constantly endeavour to pursue our original company motto of "Quality and Service"

Our team of qualified quality experts put careful consideration into the design and function of each and every style of garment that Santon Workwear manufactures. Our buyers also source only the best quality fabrics and trims that make up our garments to ensure lasting longevity of each and every item that is made.

We pride ourselves on not only providing high quality workwear to all markets, but that we employ and train local South Africans to do so. Established in 1995, we have grown into a competitive company, manufacturing over 3500 garments per day in our Hammarsdale factory, where we employ approximately 280 people.

Our company is SABS approved under the Endurance Workwear banner, and under that brand we have the ability to supply everyone from smaller subcontractors through large mining companies up to parastatals.

Together with manufacturing workwear, we are also distributors for many different safety footwear brands, namely Kaliber, Bova, Lemaitre, Frams and Wayne. We also stock various PPE accessories such as t-shirts, golf shirts, rainwear and Hi-Viz clothing. We offer in-house screen printing and embroidery in order to supply a fully branded product to the customer.

## INDEX:

»»	<b>Pg 3 - 8</b>	..... Polycotton Workwear
»»	<b>Pg 9 - 11</b>	..... HACCP Compliant Workwear
»»	<b>Pg 12</b>	..... Acid Resistant Workwear
»»	<b>Pg 13</b>	..... Denim Conti Suits & Specialised Workwear
»»	<b>Pg 14</b>	..... Winter Workwear
»»	<b>Pg 15</b>	..... SABS J54 Workwear
»»	<b>Pg 17-18</b>	..... SABS D59 Flame & Acid Resistant
»»	<b>Pg 22</b>	..... Mining Wear
»»	<b>Pg 24</b>	..... T-Shirts & Golfers
»»	<b>Pg 25</b>	..... Rainwear
»»	<b>Pg 26</b>	..... Aprons
»»	<b>Pg 28 - 31</b>	..... Footwear

## CONTACT US:

### DURBAN OFFICE

Hammarsdale Factory & Head Office  
Unit 16 Spurwing Industrial Park  
26 Anderson Road  
Hammarsdale  
Tel: 031-569-6106

### GAUTENG OFFICE

Sales & Distribution Office  
Unit B, Hi-Tech Industrial Park  
14-16 Gerhardus Street, Strijdom Park  
Johannesburg  
Tel: 011-791-0919

# POLYCOTTON WORKWEAR

## SW01 JACKET

### GARMENT SPECS:

- YKK zips
- Top pocket with flap
- Fabric: 65/35 Polycotton
- 210 gsm
- Sizes: 30-56

### COLOURS IN STOCK:

- |  |  |
|--|--|
|  ROYAL BLUE |  BLACK  |
|  NAVY BLUE  |  GREY   |
|  WHITE      |  ORANGE |
|  EMERALD    |  RED    |

### MANUFACTURED COLOURS:

- |  |  |
|--|--|
|  KHAKI        |  YELLOW |
|  BOTTLE GREEN |  |



## SW01 TROUSER

### GARMENT SPECS:

- YKK zips
- Triple stitched in-leg
- Fabric: 65/35 Polycotton
- 210 gsm
- Sizes: 26-52

### COLOURS IN STOCK:

- |  |  |
|--|--|
|  ROYAL BLUE |  BLACK  |
|  NAVY BLUE  |  GREY   |
|  WHITE      |  ORANGE |
|  EMERALD    |  RED    |

### MANUFACTURED COLOURS:

- |  |  |
|--|--|
|  KHAKI        |  YELLOW |
|  BOTTLE GREEN |  |







**SANTON**  
WORKWEAR  
PTY LTD



# POLYCOTTON WORKWEAR



## SW02 JACKET

### GARMENT SPECS:

- YKK zips
- Top pocket with flap
- Fabric: 65/35 Polycotton
- 210 gsm
- Sizes: 30-56

### COLOURS IN STOCK:



### MANUFACTURED COLOURS:

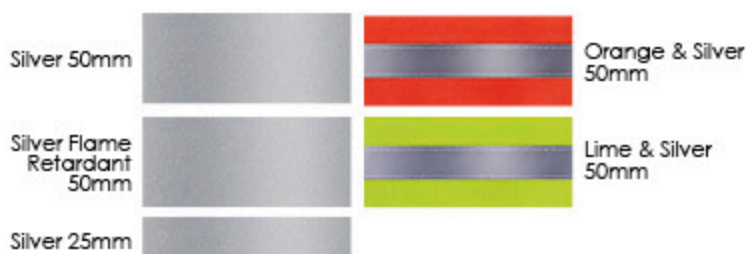


## SW02 TROUSER

### GARMENT SPECS:

- YKK zips
- Triple stitched in-leg
- Fabric: 65/35 Polycotton
- 210 gsm
- Sizes: 26-52

## REFLECTIVE TAPE OPTIONS



# POLYCOTTON 2-TONE WORKWEAR



## SW04 JACKET

### GARMENT SPECS:

- Fabric: 65/35 Polycotton
- 210 gsm
- Front and back contrast yokes
- YKK zips
- Top pocket with flap
- Sizes: 30-56

### MANUFACTURED COLOURS:



## SW04 JACKET

### GARMENT SPECS:

- Fabric: 65/35 Polycotton
- 210 gsm
- YKK zips
- Triple Stitch In-leg
- Sizes: 26-52

### MANUFACTURED COLOURS:



### MANUFACTURING INFO:

SANTON is a manufacturer and can make up garments as per company spec.

Minimums of 100 units per colour per style.

# POLYCOTTON WORKWEAR

## SW11 LADIES CANTEEN



### GARMENT SPECS:

- Fabric: 65/35 Polycotton
- 210 gsm
- Sizes: S - 4XL
- 3 Pockets
- Button Front

### COLOURS IN STOCK:

ROYAL BLUE ☐ WHITE

### MANUFACTURED COLOURS:

NAVY BLUE RED GREY  
ORANGE KHAKI BOTTLE GREEN  
EMERALD GREEN YELLOW BLACK

ALSO AVAILABLE IN J54

## SW12 MENS DUSTCOAT



### GARMENT SPECS:

- Fabric: 65/35 Polycotton
- 210 gsm
- Sizes: S - 4XL
- 3 Pockets
- Button Front

### COLOURS IN STOCK:

ROYAL BLUE ☐ WHITE

### MANUFACTURED COLOURS:

NAVY BLUE RED GREY  
ORANGE KHAKI BOTTLE GREEN  
EMERALD GREEN YELLOW BLACK

ALSO AVAILABLE IN J54

# POLYCOTTON WORKWEAR



## SW15 SECURITY Short Sleeve Shirt

### GARMENT SPECS:

- Button Front
- 2 Chest Pockets
- Fabric: 65/35 Polycotton
- 210 gsm
- Epaulettes on Shoulders
- Sizes: 30-56

### MANUFACTURED COLOURS:

- |   |  |
|---|--|
|  ROYAL BLUE      |  BLACK          |
|  NAVY BLUE       |  GREY           |
|  WHITE           |  ORANGE         |
|  KHAKI           |  RED            |
|  EMERALD GREEN |  BOTTLE GREEN |
|  YELLOW        |  |



## SW15 SECURITY Trouser

### GARMENT SPECS:

- Button Front Closure
- Triple Stitched In-leg
- Fabric: 65/35 Polycotton
- 210 gsm
- Epaulettes on Shoulders
- Sizes: 26-52

### MANUFACTURED COLOURS:

- |   |  |
|---|--|
|  ROYAL BLUE    |  BLACK        |
|  NAVY BLUE     |  GREY         |
|  WHITE         |  ORANGE       |
|  KHAKI         |  RED          |
|  EMERALD GREEN |  BOTTLE GREEN |
|  YELLOW        |  |



SAN

Food

H A C C P   C O M P L I A N T   W O R K W E A R



# POLYCOTTON HACCP WORKWEAR

We are proud to present our range of HACCP compliant workwear under the SANFOOD workwear banner. All garments are manufactured to the specifications that conform with the various HACCP compliancy requirements, in the food processing, catering as well as pharmaceutical industries.

SANFOOD garments are made to the highest quality, and are made from either 240gsm 65%polyester / 35%Cotton, or 210gsm 65% polyester / 35% Cotton. This ensures the longevity of the garment and the harsh washing conditions relating to the industries concerned.

All garments shown in the catalogue are ex-stock, ensuring rapid delivery times.

SANFOOD garments are manufactured and sold exclusively by Santon Workwear PTY(LTD), that has 24 years of experience in manufacturing high quality protective clothing.

## SAN001 PYJAMA SUIT



### GARMENT SPECS:

#### **JACKET:**

- Pull-over Jacket with Chinese Collar
- Elasticated Cuffs
- 1 Internal Chest Pocket
- Loop For Hanging

#### **PANTS:**

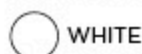
- Fully Elasticated Waist with Drawstring
- 1 Internal Pocket

#### **Fabrics:**

65/35 Polycotton - 210gsm

**Sizes:** 30 -56 Available

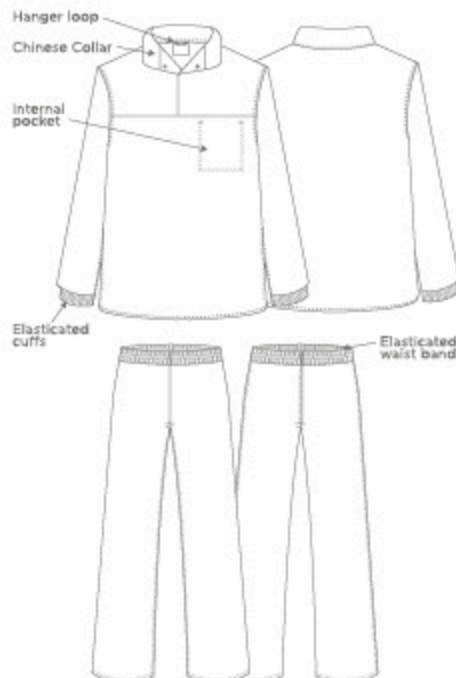
#### **COLOURS IN STOCK:**



#### **MANUFACTURED COLOURS:**

AVAILABLE IN 210gsm & 240 gsm

Please enquire with us regarding all colours available and minimums required



## SAN002 PRESS STUD SUIT



### GARMENT SPECS:

#### **JACKET:**

- Chinese Collar
- Full Press Stud Closure
- Elasticated Cuffs
- Loop For Hanging
- 1 Internal Chest Pocket with Flap

#### **PANTS:**

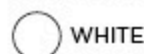
- Elasticated Back Waist
- Press Stud Closure at Front
- Belt Loops
- 1 Internal Pocket

#### **Fabrics:**

65/35 Polycotton - 210gsm

**Sizes:** 30 -56 Available

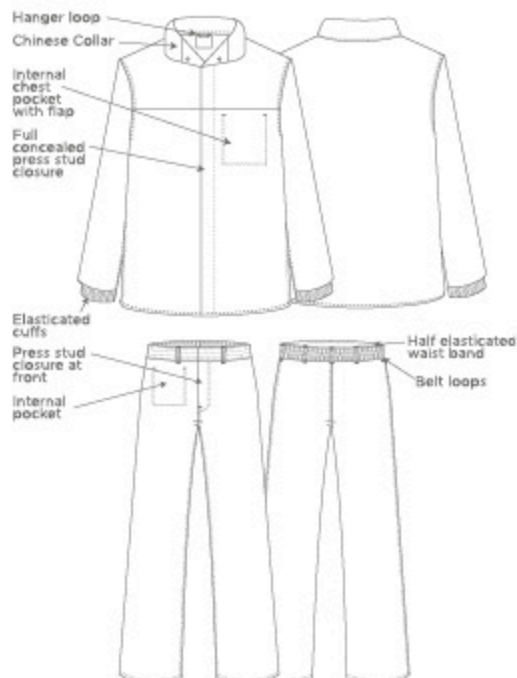
#### **COLOURS IN STOCK:**



#### **MANUFACTURED COLOURS:**

AVAILABLE IN 210gsm & 240 gsm

Please enquire with us regarding all colours available and minimums required







## SAN003 DUSTCOAT

### GARMENT SPECS:

#### JACKET:

- Chinese Collar
- Full Press Stud Closure
- Elasticated Cuffs
- Loop For Hanging
- 1 Internal Chest Pocket with Flap

#### Fabrics:

65/35 Polycotton - 210gsm

**Sizes:** 32 -52 Available

#### COLOURS IN STOCK:

○ WHITE

#### MANUFACTURED COLOURS:

AVAILABLE IN 210gsm & 240 gsm

Please enquire with us regarding all colours available and minimums required





# ACID RESISTANT WORKWEAR

## SW08 POLYCOTTON ACID RESISTANT

### GARMENT SPECS:

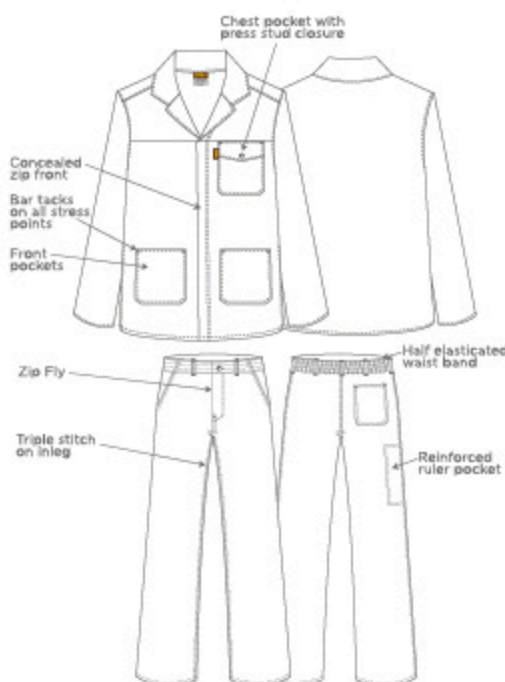
- Fabric: 65/35 Polycotton
- 210 gsm
- Acid Resistant finish
- YKK zips
- Triple stitched in-leg
- Top pocket with flap

### COLOURS AVAILABLE:

 CEDAR

**ACID RESISTANT**

Fabric used is chemically treated to repel and withstand exposure to acid



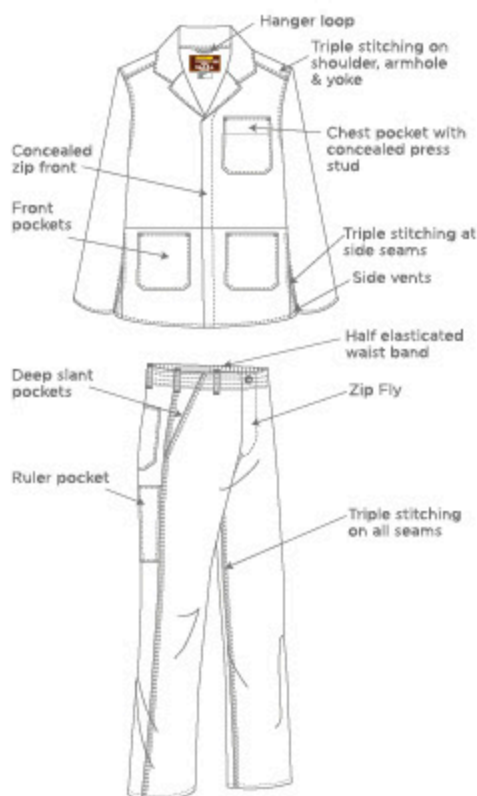
## SW29 POLYVISCOSE ACID RESISTANT

### GARMENT SPECS:

- **FABRIC: POLYVISCOSE**
- Acid resistance
- YKK zips
- Triple stitched complete
- Top pocket with flap
- SABS cut & specifications

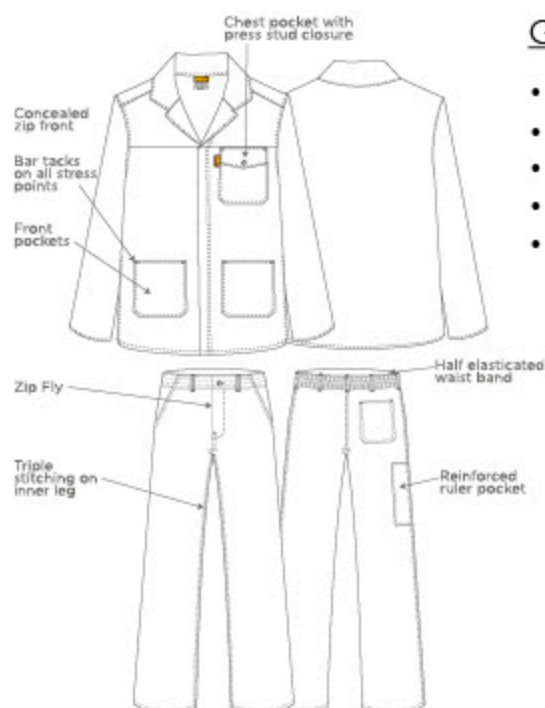
### COLOURS AVAILABLE:

 CEDAR



# DENIM WORKWEAR

## SW09 COTTON RICH DENIM CONTI SUIT



### GARMENT SPECS:

- Fabric: 12 oz heavy duty Denim
- YKK zips
- Triple stitched in-leg
- Top pocket with flap
- Cotton Rich

## SPECIALISED WORKWEAR

- As we manufacture all of our garments ourselves, we are able to produce a vast array of designs and colours according to customer specification
- Below are a few examples of customised workwear we are able to produce
- Manufactured items must be 100 units or more



# WINTER WORKWEAR

## SW27 INSULATED FLAME/ACID THERMAL JACKET

### GARMENT SPECS:

- YKK Brass zip
- Fabric: D59 100% Cotton
- Sizes: S - 4XL
- Flame Retardant
- Acid Resistant
- Sasol Spec
- Flame lining
- Flame Wadding
- 50mm silver tape on arms
- 4 Pockets

### MANUFACTURED COLOURS:

- NAVY BLUE



## SW26 INSULATED THERMAL JACKET

### GARMENT SPECS:

- YKK Brass zip
- Fabric: J54 100% Cotton
- Sizes: S - 4XL
- 100% Cotton Lining
- 2 Hip pockets
- Elasticated cuffs
- Elasticated back

### MANUFACTURED COLOURS:

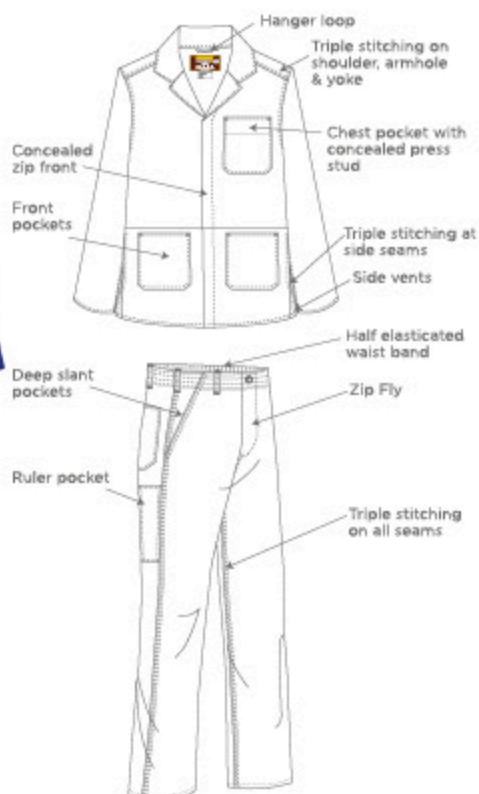
- NAVY BLUE
- ROYAL BLUE
- ORANGE





# SABS WORKWEAR

## EDR01 J54 SABS APPROVED CONTI SUITS



**FABRIC:** J54 100% COTTON

**WEIGHT:** 235 gsm

**SIZES:** 30-56

### COLOURS IN STOCK:

ROYAL BLUE

### MANUFACTURED COLOURS:

NAVY BLUE

GREY

WHITE

ORANGE

KHAKI

YELLOW

RED

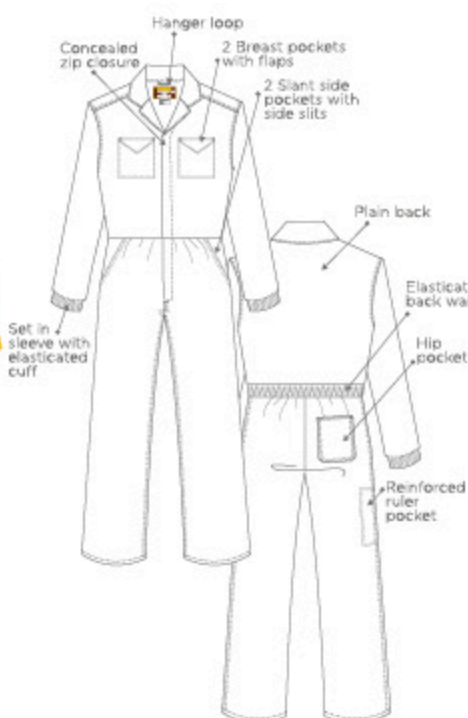
BLACK

EMERALD GREEN

BOTTLE GREEN



## EDR02 J54 SABS APPROVED BOILER SUITS



**FABRIC:** J54 100% COTTON

**WEIGHT:** 235 gsm

**SIZES:** 30-56

### MANUFACTURED COLOURS:

ROYAL BLUE

NAVY BLUE

GREY

WHITE

ORANGE

KHAKI

YELLOW

RED

BLACK

EMERALD GREEN

BOTTLE GREEN





***ENDURANCE***

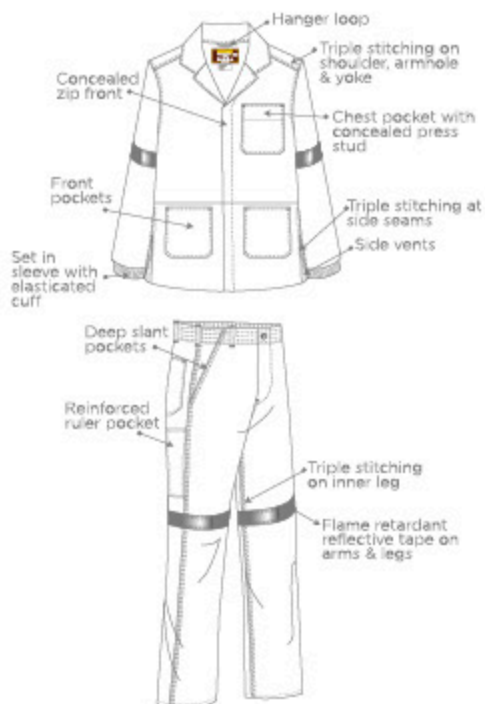
WORKWEAR >>>>





# SABS WORKWEAR

## EDR03 D59 SABS APPROVED FLAME & ACID RETARDANT CONTI SUITS



**FABRIC:** D59 100% COTTON

**WEIGHT:** 300 gsm

**SIZES:** 30-56

### COLOURS IN STOCK:

NAVY BLUE

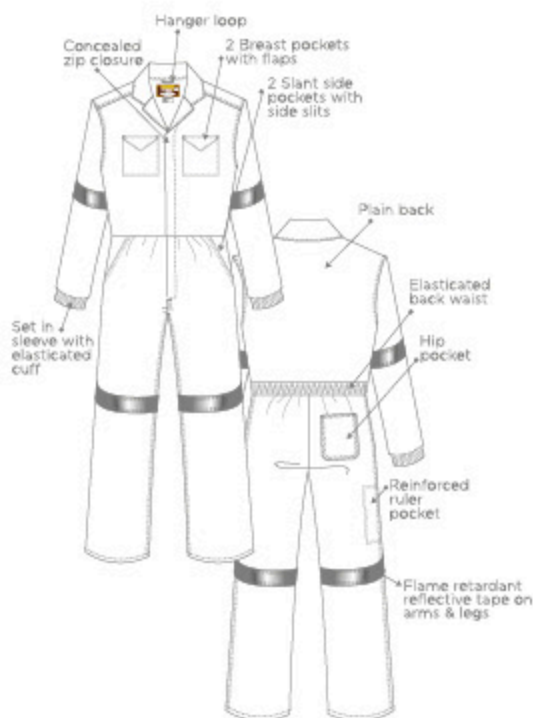
### MANUFACTURED COLOURS:

ORANGE

**D59** **SABS APPROVED**



## EDR04 D59 SABS APPROVED FLAME & ACID RETARDANT BOILER SUITS



**FABRIC:** D59 100% COTTON

**WEIGHT:** 300 gsm

**SIZES:** 30-56

### COLOURS IN STOCK:

NAVY BLUE

### MANUFACTURED COLOURS:

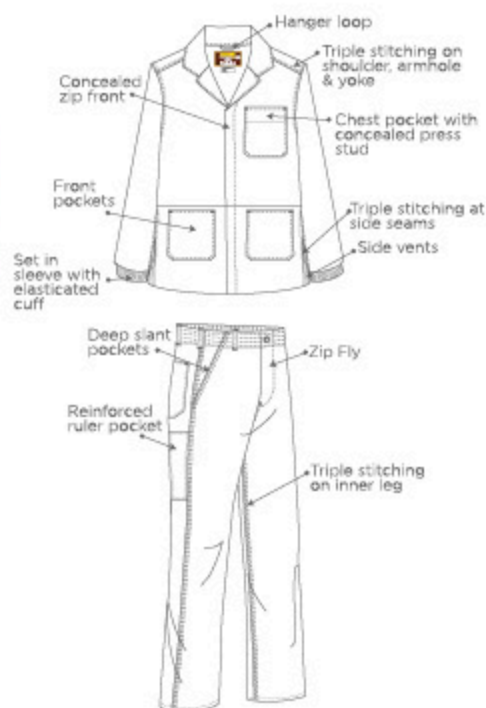
ORANGE

**D59** **SABS APPROVED**





## EDR05 D59 SABS APPROVED FLAME RETARDANT CONTI SUITS



**FABRIC:** D59 100% COTTON

**WEIGHT:** 300 gsm

**SIZES:** 30-56

**COLOURS IN STOCK:**

 FERN

**MANUFACTURED COLOURS:**

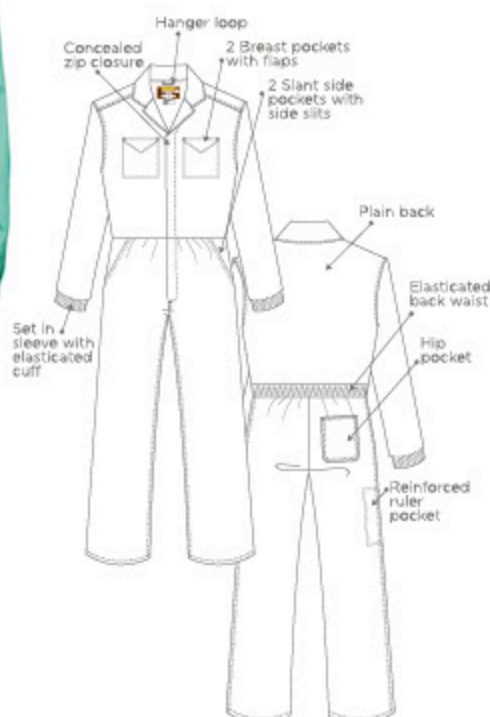
 ORANGE

 NAVY BLUE

**D59** 



## EDR06 D59 SABS APPROVED FLAME RETARDANT BOILER SUITS



**FABRIC:** D59 100% COTTON

**WEIGHT:** 300 gsm

**SIZES:** 30-56

**COLOURS IN STOCK:**

 FERN

**MANUFACTURED COLOURS:**

 ORANGE

 NAVY BLUE

**D59** 





# ENDURANCE

WORKWEAR >>>>



**SABS**  
APPROVED

MADE IN SOUTH AFRICA  
  
MADE IN SOUTH AFRICA



# ENDURANCE

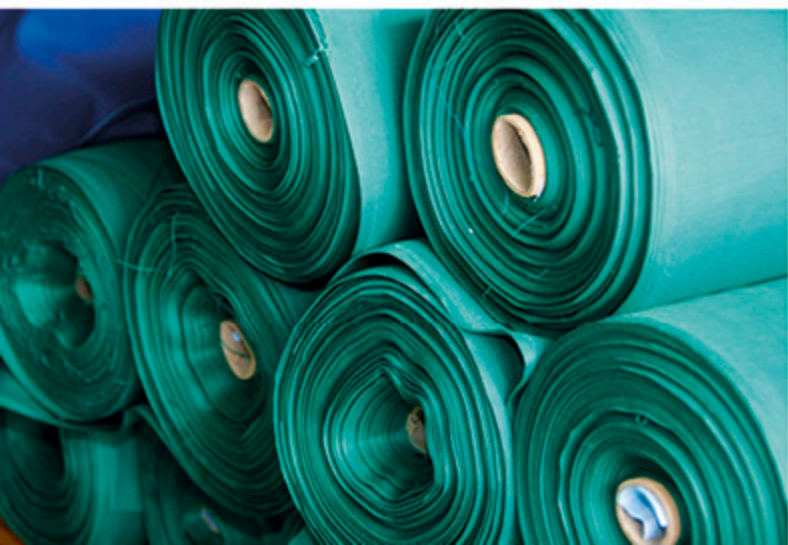
WORKWEAR >>>>







## SOUTH AFRICAN MADE PRODUCTS

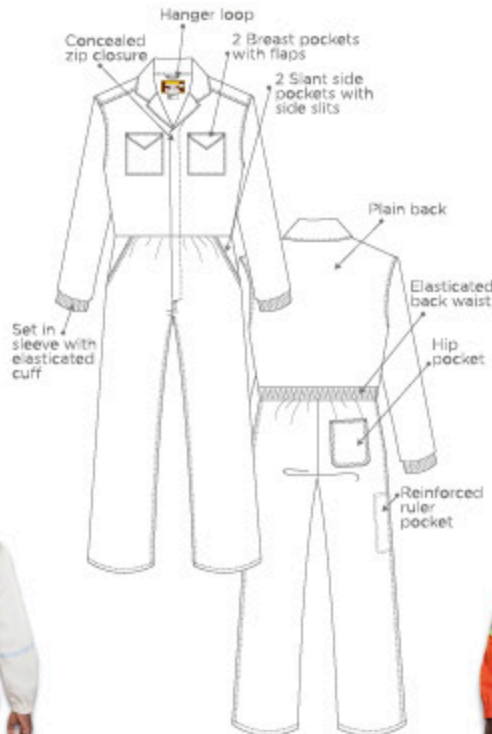




# MINING WEAR

ENDURANCE WORKWEAR GARMENTS CAN BE MANUFACTURED ACCORDING TO CUSTOMER SPECIFICATIONS.

Below are a few examples of customer specific workwear garments that can be produced.







**SANTON**  
WORKWEAR  
PTY LTD



## SW13 T-SHIRTS



## GARMENT SPECS:

- Fabric: 160g & 180g, 100% Cotton Sizes: S - 4XL

## COLOURS IN STOCK:



## SW14 GOLFERS



## GARMENT SPECS:

- Fabric: 175g Polycotton Pique Knit
- Sizes: S - 4XL

## COLOURS IN STOCK:



# RAINWEAR

## SW23 RAINSUITS

### GARMENT SPECS:

- Rubberized
- Stitched Seams
- YKK Zip Front
- Sizes: S-5XL

### COLOURS IN STOCK:

-  Yellow
-  Navy blue



## PRINTING & EMBROIDERY

With our In-house screen printing plant as well as our extremely reliable embroiderers, we are able to supply a fully branded product quickly and effectively to the customer.





# APRONS

## SW19 HALF APRONS

### GARMENT SPECS:

- 65/35 Polycotton
- 210 gsm
- One size fits all
- Tied behind back
- Minimum order of 50 units per colour



## SW20 PINAFORE APRONS

### GARMENT SPECS:

- 65/35 Polycotton
- 210 gsm
- One size fits all
- Tied on sides
- Minimum order of 50 units per colour



## SAN008 BUTCHER APRONS

### GARMENT SPECS:

- 65/35 Polycotton
- 210 gsm
- One size fits all
- Tied behind back
- Minimum order of 50 units per colour



## SAN009 FULL APRONS

### GARMENT SPECS:

- 65/35 Polycotton
- 210 gsm
- One size fits all
- Tied behind back
- Minimum order of 50 units per colour







# SANTON WORKWEAR PTY LTD







# FOOTWEAR

## KALIBER CHELSEA

**KALIBER**


Product Code: 10006  
 Specifications: Smooth buffalo leather  
 Choc Brown & Black  
 STC & SMS  
 EN ISO 23045  
 Sizes: 5 - 12

## KALIBER CONDOR

**KALIBER**


Product Code: 10002  
 Specifications: Genuine leather upper  
 STC & SMS  
 NRCS Approved  
 Sizes: 5 - 12

## KALIBER CELESTE

**KALIBER**


Product Code: 10001  
 Specifications: Smooth buffalo leather upper  
 STC  
 NRCS Approved  
 EN ISO 20345  
 Sizes: 3 - 9

## KALIBER RAPTOR

**KALIBER**


Product Code: 10001  
 Specifications: Genuine leather upper  
 STC & SMS  
 NRCS Approved  
 Sizes: 5 - 12

## KALIBER JACKAL

**KALIBER**


Product Code: 10001  
 Specifications: Genuine buffalo leather upper  
 STC  
 NRCS Approved  
 EN ISO 20345  
 Sizes: 5 - 12

## KALIBER REACTION

**KALIBER**


Product Code: 10004  
 Specifications: Smooth buffalo leather upper  
 STC & SMS  
 NRCS Approved  
 EN ISO 20345  
 Sizes: 5 - 13



# FOOTWEAR

## BOVA BREMEN



Product Code: 20001  
Specifications: Full grain Leather  
STC  
SANS 20345  
Sizes: 5 - 13

## BOVA CHELSEA



Product Code: 90006  
Specifications: Full grain Leather  
STC  
SANS 20345  
Sizes: 3 - 13

## BOVA NEOFLEX



Product Code: 90004  
Specifications: Full grain Leather  
STC  
SANS 20345  
Sizes: 3 - 15

## BOVA MAVERICK



Product Code: 60002  
Specifications: Genuine Split Leather  
STC  
SANS 20345  
Sizes: 4 - 13

## BOVA RADICAL SHOE



Product Code: 60001  
Specifications: Genuine Split leather  
STC  
SANS 20345  
Sizes: 4 - 13

## BOVA NEOGRIP SHOE



Product Code: 90005  
Specifications: Full grain Leather  
STC  
SANS 20345  
Sizes: 5 - 13

## BOVA MUNICH



Product Code: 20002  
Specifications: Full grain leather  
STC  
SANS 20345  
Sizes: 5 - 13

## LEMAITRE HERCULES



Product code: 8049  
Specifications: Leather upper  
STC  
SABS Approved - SANS 20345  
Sizes: 5 - 12

## LEMAITRE MAXECO



Product code: 8031  
Specifications: Leather upper  
STC  
SABS Approved - SANS 20345  
Sizes: 2 - 13

## LEMAITRE SPORT



Product code: 8050  
Specifications: Leather upper  
STC  
SABS Approved - SANS 20345  
Sizes: 2 - 12

## LEMAITRE ZEUS



Product Code - 8117  
Specifications: Leather upper  
STC  
SABS Approved - SANS 20345  
Sizes: 5 - 12

## GEO-TREK



Product code: 4911  
Specifications: Genuine leather  
STC  
SANS/ISO 20345  
6 Months Guarantee  
Sizes: 4 - 13

## NDLOVU ADDO BOOT



Product code: 8402  
Specifications: Genuine leather  
STC  
EN 20345  
Sizes: 3 - 13

## NDLOVU PUMBA BOOT



Product code: 8401  
Specifications: Genuine leather  
STC  
EN 20345  
Sizes: 3 - 13

## EXCEL SHOE



Product code: 9003  
Specifications: Full grain leather  
STC  
SANS/ISO 20345  
6 Months Guarantee  
Sizes: 4 - 13



## FOOTWEAR

## INYATI TITANIUM BOOTS



Product code: 4060  
Specifications: Full Grain Leather  
Heat resistance 300 degrees  
Non-conductive sole  
STC & SANS/ISO 20345  
Sizes: 4 - 13

## IGNITE BOOT



Product code: 9004  
Specifications: Full Grain Leather  
STC  
SANS/ISO 20345  
6 Months Guarantee  
Sizes: 4 - 13

## GEO ROAM



Product code: 4701  
Specifications: Genuine Leather  
STC  
SANS/ISO 20345  
Sizes: 4 - 13

## GEO COUNTESS



Product code: 3905  
Specifications: Genuine leather upper  
STC  
UN20345  
Sizes: 2 - 9



## WAYNE GRIPPER



Product code: F1210  
Specifications: Recycled PVC upper & sole  
STC & SANS 20347  
Sizes: 3 - 13



## WAYNE EGOLI 1



Product Code: F1270  
Specifications: PVC uppers & PVC nitrile sole  
STC & SANS 20347  
Sizes: 3 - 13



## WAYNE EGOLI WHITE



Product Code: F1271  
Specifications: PVC nitrile uppers  
PVC nitrile sole  
STC & SANS 20347  
Sizes: 3 - 13



## WAYNE DURALIGHT 2



Product code: F1030  
Specifications: PVC nitrile uppers & sole  
White upper/red sole  
SANS 20347  
Sizes: 5 - 12



## WAYNE DURALIGHT LADIES



Product code: F1689  
Specifications: PVC uppers  
PVC sole  
Sizes: 3 - 9



## WAYNE DURALIGHT MENS



Product Code: F1040  
Specifications: PVC uppers  
PVC sole  
Sizes: 5 - 12



## WAYNE ANKLE MINER



Product code: F1850  
Specifications: Black PVC uppers  
Toffee PVC/Nitrile sole  
SANS 20347  
Sizes: 5 - 12

## MADONNA SHOE



Product code: 55004  
Specifications: Full Grain Leather upper  
STC  
SANS/ISO 20345  
Sizes: 3 - 8

## WAYNE DURALIGHT MENS



Product code: 51002  
Specifications: Full Grain Leather upper  
STC  
SANS/ISO 20345  
Sizes: 3 - 8

## WAYNE ANKLE MINER



Product code: 51003  
Specifications: Full Grain Leather upper  
STC  
SANS/ISO 20345  
Sizes: 3 - 8

## MADONNA SHOE



Product code: 55006  
Specifications: Full Grain Leather upper  
STC  
SANS/ISO 20345  
Sizes: 3 - 8







# SANTON WORKWEAR

PTY LTD

## DURBAN OFFICE

Hammarisdale Factory  
& Head Office

Unit 16 Spurwing  
Industrial Park  
26 Anderson Road  
Hammarisdale

Tel: 031-569-6106

## GAUTENG OFFICE

Sales & Distribution Office

Unit B, Hi-Tech Industrial Park  
14-16 Gerhardus Street  
Strijdom Park  
Johannesburg

Tel: 011-791-0919

## MEASUREMENTS & SIZES

### Conti 2 Piece Suits / Boiler Suits:

size	32	34	36	38	40	42	44	46	48	50	52
chest (cm)	82	87	92	97	102	107	112	117	122	127	132
waist (cm)	72	77	82	87	92	97	102	107	112	117	122

### Dustcoats/Ladies Dresses:

size	32	34	36	38	40	42	44	46	48	50	52
chest (cm)	82	87	92	97	102	107	112	117	122	127	132

### Trousers Only:

size	32	34	36	38	40	42	44	46	48	50	52
waist (cm)	72	77	82	87	92	97	102	107	112	117	122

Designed and printed by



[www.facebook.com/pinkpeachdesigns](https://www.facebook.com/pinkpeachdesigns)  
Tel: 082-480-0080