



TITAN
WORKWEAR



Titan Workwear is a high quality, competitive workwear range designed to fuse fashion and Workwear. It was designed with the intention of creating a sense of pride in the workplace, and a want to work culture, keeping in mind the importance of safety in the workplace. We believe that our employees are our company, so why not translate that belief into the products we manufacture. By creating a want to work culture within your work environment, we hope to increase your employees comfort and productivity. This is what drives the brand, happy employees, happy employer.

Made in South Africa



We at Titan consider our employees to be our most valuable asset, without them we wouldn't have a brand. In a country where unemployment is rife, We employ over 260 qualified community members and we are proud of that. Titan garments are manufactured completely in SA in our owner managed factory in Hammarsdale.

Flexi-fit



Your employees flexibility and comfort within the workplace should be of utmost importance in building a better, more productive working environment.

Careful consideration in the cut, make-up and styling has gone into the Titan design. Creating one of the most flexible, hard-working and durable overall in the market.

Sizing of suits available is from 30 - 60

Track and Trace Technology

Each Titan Workwear garment is labelled with a date of manufacture of that garment. Enabling your company to track and trace issue dates of each employee, as well as enabling you to annually budget correctly the issuing of overalls to your employees.

Dura-Tex235



The innovative design, durability and strength defines the fabrics used in the Titan range

Our Dura-Tex235 fabric is a 235gsm polycotton fabric, made to the highest quality, and if correctly washed can withstand 140 washes and still withhold its safe and stylish appearance.

Please refer to wash care instructions on the label.

Vislon Zip



Fusing fashion and workwear with added benefit of high quality finishes such as our YKK Vislon zip on all Titan garments, creating a want to wear attitude within the workplace



1. Dura-tex 235gsm fabric
2. Premium YKK vislon zips
3. Mitred front pockets
4. Side vents
5. Chest pocket with flap & pen section
6. Triple stitching on shoulder & sleeves
7. Money pocket on trousers
8. Side swing pockets
9. Triple stitching on inleg & back rise
10. Reinforced ruler pocket
11. Back pocket with flap



VISLON



TRACK TRACE

**JACKETS & TROUSERS
SOLD SEPARATELY**

TITAN JACKETS & TROUSERS

CODE: TT01



COLOURS AVAILABLE

ROYAL NAVY GREY BLACK EMERALD KHAKI RED ORANGE



VISION



TITAN REFLECTIVE JACKETS & TROUSERS

CODE: TT02



REFLECTIVE TAPE OPTIONS

SILVER 25MM

SILVER 50MM

SILVER FLAME
RETARDANT
50MM

LIME & SILVER

50MM

ORANGE & SILVER

50MM

LIME & SILVER

FLAME RETARDANT

50MM

COLOUR AVAILABLE

ROYAL NAVY GREY BLACK EMERALD KHAKI RED ORANGE





TITAN 2TONE REFLECTIVE JACKETS & TROUSERS

CODE: TT03



FABRIC: DURAREFLECT 50/50
DURATEX 235 65/35

COLOURS: FLOURESCENT ORANGE/NAVY
FLOURESCENT LIME/NAVY



TITAN DENIM JACKET & TROUSER

CODE: TT04



FABRIC: 100% COTTON DENIM
WEIGHT: 11oz



TITAN ACID RESISTANT CONTI JACKET & TROUSER

CODE: TT07



FABRIC: 78% POLYESTER/22% VISCOSE
WEIGHT: 265 gsm



TITAN 100% COTTON VENTED REFLECTIVE WORK SHIRTS

CODE: TT05



FABRIC: 100% COTTON TWILL
WEIGHT: 145 gsm

COLOURS: PLAIN NAVY
NAVY/ORANGE
NAVY/YELLOW

TITAN DUSTCOATS

CODE: TT06



COLOURS AVAILABLE:



FABRIC: DURATEX 235 65/35
STYLE: • PRESS STUD CLOSURE
• BACK SLIT
• 3 POCKETS





COLOURS AVAILABLE ON PRE ORDER:

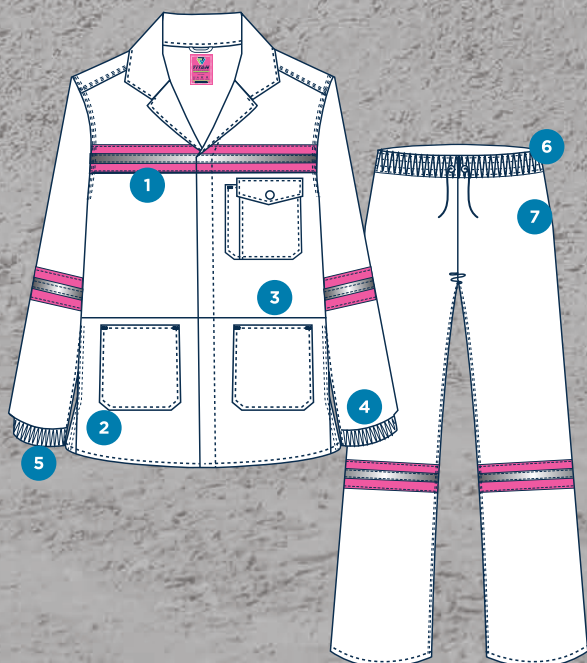


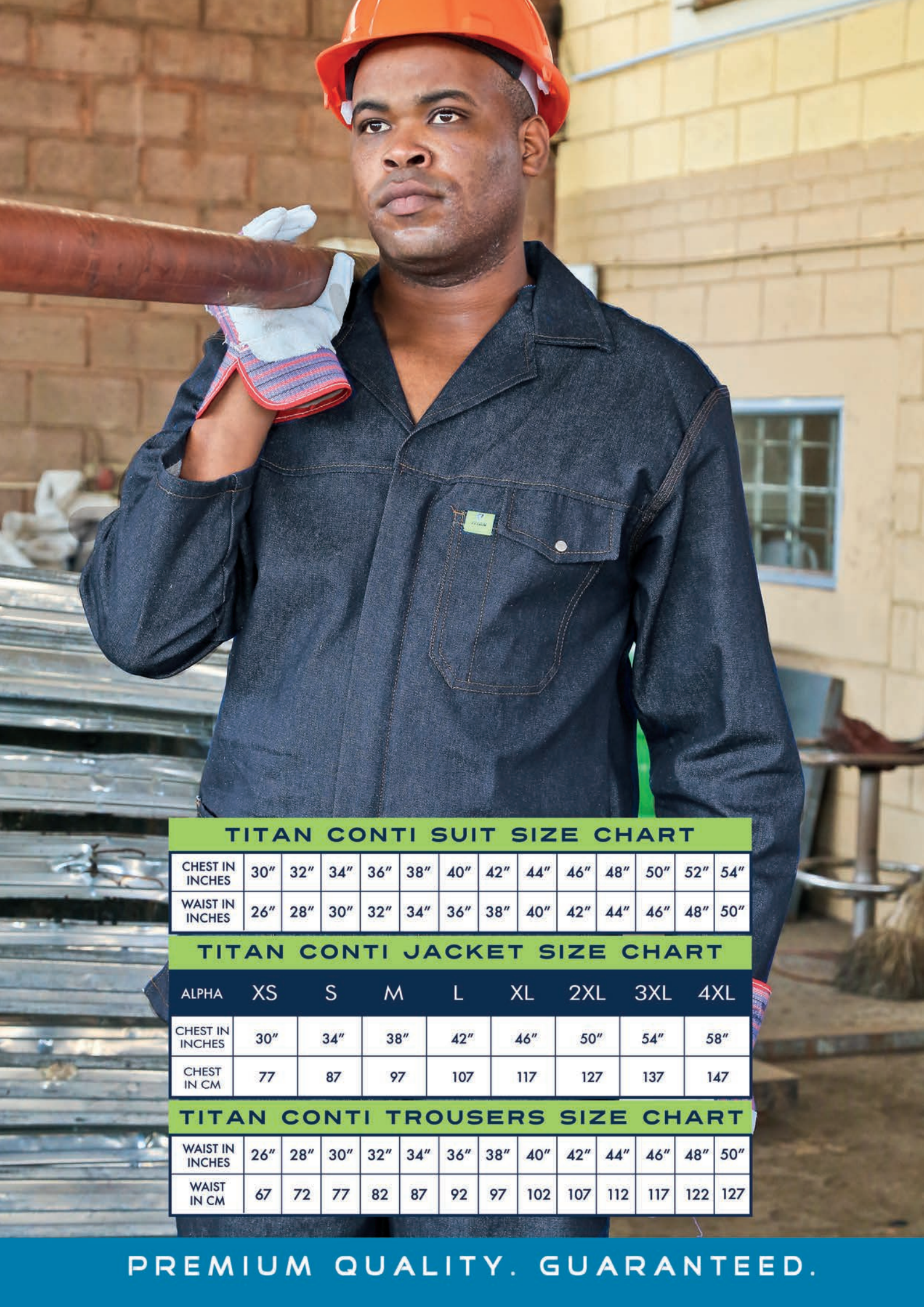
TITAN LADIES JACKET

1. Larger chest circumference for comfort
2. Length 3cm longer than standard
3. Slimmer waist for fit
4. Elasticated cuffs
5. Side slits for ease of movement

TITAN LADIES PULL-ON TROUSER

6. Generous fit with elasticated waist and drawstring for adjustable fit
7. 2 side pockets and 1 back pocket





TITAN CONTI SUIT SIZE CHART

CHEST IN INCHES	30"	32"	34"	36"	38"	40"	42"	44"	46"	48"	50"	52"	54"
WAIST IN INCHES	26"	28"	30"	32"	34"	36"	38"	40"	42"	44"	46"	48"	50"

TITAN CONTI JACKET SIZE CHART

ALPHA	XS	S	M	L	XL	2XL	3XL	4XL
CHEST IN INCHES	30"	34"	38"	42"	46"	50"	54"	58"
CHEST IN CM	77	87	97	107	117	127	137	147

TITAN CONTI TROUSERS SIZE CHART

WAIST IN INCHES	26"	28"	30"	32"	34"	36"	38"	40"	42"	44"	46"	48"	50"
WAIST IN CM	67	72	77	82	87	92	97	102	107	112	117	122	127

PREMIUM QUALITY. GUARANTEED.